

Need Wi-Fi?

Check out a mobile hotspot!

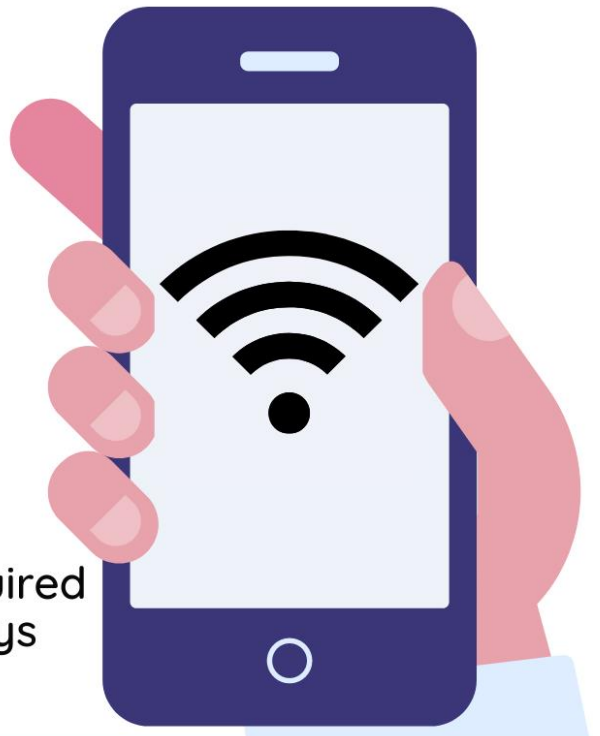
**Borrow one free with
your library card!**



The library has 9 NEW Wi-Fi hotspots available for Winchendon residents with a CW MARS library card in good standing who is age 18 or older.

You can use the hotspot to:

- Surf the internet
- Get homework help
- Stream movies and TV shows
- Video chat
- Apply for jobs
- and more!



What you need to know:

- A library card in good standing is required
- Hotspots are free to borrow for 14 days
- One hotspot per household at a time

Have questions or want to check a hotspot out?

Visit the library and speak with one of our staff members for assistance.



Beals Memorial Library

50 Pleasant Street, Winchendon, MA 01475 | 978-297-0300 | bealslibrary.org



Beals Library Hotspots Policy

About Hotspots

The library has nine portable Wi-Fi hotspots available for Winchendon residents this CWMARS library cards in good standing. These Wi-Fi hotspots connect to the T-Mobile network and can be used with laptops, tablets, phones, portable games or other devices that access the Internet through a wireless connection. They provide unlimited, high speed data throughout when connected to the T-Mobile cellular data network.

With the hotspots, patrons can stream videos to their devices without using their data plan or can take a hotspot and their wireless devices on vacation and have fast, unlimited data as long as a T-Mobile cellular network is available. As many as fifteen devices can be connected at one time, so the whole family can enjoy Internet access away from your home Wi-Fi network.

These devices can be reserved by coming in or calling/emailing the library. Library staff are available to help connect your tablet or laptop, or to answer any questions you may have about these new Wi-Fi hotspots.

Loan Rules and Duration

- 2-week (14 day) loan – NO RENEWAL
- One use per household per 30 days.
- Borrowers must be 18+.
- Return to Beals Circulation Desk ONLY, **not** in the Book Drop.
- Late Fees of \$5 per day for each day the device is kept over the 2-week loan period. The device will be shut off after the 2-day loan period and you will be charged a replacement fee of \$140.
- The patron reserving the hotspot must pick up the device with their own library card and a photo ID.
- Replacement costs:
 - \$5.00 for the Start Guide
 - \$5.00 for the Power Plug
 - \$120 for the Device
 - \$10 Hotspot Case
 - \$140.00 for Full Replacement

Disclaimer

The library is not responsible for damage to any device connected to the Internet through the borrowed hotspot, nor for any content received over the Internet. Tampering with library equipment, software, or programming, including bypassing security functions, is prohibited.



Beals Library Hotspots Borrower Form

DATE: _____ / _____ / 20_____

Borrower's Name	
-----------------	--

Library Card Number	
---------------------	--

Hotspot Number	
----------------	--

Reservation date	____ / ____ / ____	Check out date	____ / ____ / ____
Due date	____ / ____ / ____	Check in date	____ / ____ / ____

Check Out Check List:

Please check that the patron has the following before checking out:

____ Start Guide ____ Hotspot Device
____ Power Plug ____ Hotspot Case

Check in Check List:

Item Return Date: _____ / _____ / 20_____	Library Staff Initials: _____
---	-------------------------------

Was the Hotspot Overdue?	<input type="checkbox"/> Yes <input type="checkbox"/> No	If yes, how many days? _____
--------------------------	--	------------------------------

Please fill out the chart below.

Please Note: All items must be returned in Good Working Condition.

If an item is overdue, missing or damaged the patron is responsible for all costs.

Item	Returned	Damaged	Missing
Start Guide			
Power Plug			
Hotspot Device			
Case			

Borrower's Agreement

I understand that the hotspot must be checked out by a patron of the Beals Memorial Library who is 18 years old or older and whose library card is in good standing.

By borrowing and using the hotspot, I am agreeing not to engage in illegal activity. The library is not responsible for any files, data, or personal information accessed or transmitted using the Wi-Fi hotspot.

Check out: I understand that only the person with the reservation must pick up the device with their own library card and a photo ID.

Return: I understand that the hotspot MUST be returned directly to a library staff member at the circulation desk.

Loan Period: I understand that the loan period is 2 weeks (14 day) with no renewal. Only one hotspot can be used per household per 30 days. Late Fees are \$5 a day for each day the device is kept over the 2-week period. The device will be shut off 2 days after the loan period and you will be charged a replacement fee of \$140.

Liability: I accept full responsibility for the hotspot and accessories while checked out to me, including:

- I am liable for repair costs if the hotspot is returned damaged.
- I am liable for replacement costs (outlined below) if the hotspot is lost or stolen while checked out to me.
- Any costs incurred will be added to my library account and must be paid to the Beals Memorial Library in full.
- **Replacement Costs:**
 - \$5.00 for the Start Guide
 - \$5.00 for the Power Plug
 - \$120 for the Device
 - \$10 for the Case
 - \$140.00 for Full Replacement

I agree to follow the Beals Memorial Library Hotspot Lending Policy when borrowing the Hotspot. I accept all responsibility for any damages and missing pieces while the hotspot is checked out in my name.

Borrower's Signature		Date: ____ / ____ / 20____
-------------------------	--	----------------------------

Library Staff Initials		Date: ____ / ____ / 20____
------------------------	--	----------------------------

Frequently Asked Questions about the Beals Library Hotspots

1. Where can I borrow a Wi-Fi hotspot?

You can reserve a Wi-Fi hotspot for pick-up at the Beals Memorial Library Circulation Desk.

2. Who can borrow a hotspot?

You must be at least 18 years old, a Winchendon resident, and have a CW MARS library card in good standing to borrow a hotspot. Usage is limited to one per household per 30 days.

3. Can I place a hold on a hotspot?

Yes. You can place a hold by coming in or calling/emailing the library. Please note that hotspots can ONLY be picked up and returned to the Library Circulation Desk, **not** in the Book Drop.

4. How long can I borrow a hotspot?

Wi-Fi hotspots check out for 14 days and there are no renewals. If a hotspot isn't returned by its due date, the wireless service to the hotspot will be remotely turned off after 2 days and you will be charged a replacement fee of \$140.

5. Can I renew a hotspot?

No. Wi-Fi hotspots are not renewable.

6. What is the coverage area of a Wi-Fi hotspot?

The hotspots connect to the T-Mobile network. See the [T-Mobile coverage area](#).

7. Can I use a hotspot outside the U.S.?

Yes, the hotspots connect to the T-Mobile network. See the [T-Mobile coverage area](#).

8. How do I use a hotspot?

A Start Guide is included with the hotspot.

TO GET STARTED:

1. Turn on the hotspot by pressing and holding the Power Button for 3 seconds. (If the device does not turn on, you may need to charge the hotspot using the USB cable.)
2. Wait about 10 seconds for the hotspot to turn on.
3. The hotspot has a series of screens that let you view device information and system alerts. Just press the Power Button to cycle through the following:
 - Home Screen
 - Data Usage display
 - Wi-Fi Name display
 - Password display
 - Web Admin URL Guide display
 - Back to the home screen.
4. Go to Wi-Fi settings on your device and find the Wi-Fi name.
5. Select the network: Beals Hotspot
6. Enter the password: winchendon!

If the hotspot's battery indicator flashes red, it needs to be charged. You can plug the hotspot into a wall outlet using the charging cable. It may take 3 to 4 hours for the battery to fully charge, but it can be used while it is charging.

9. Are there any restrictions on data or internet use?

Data usage is unlimited and internet content is not filtered. The library does not track internet usage. By borrowing and using the hotspot, you are agreeing not to engage in illegal activity. The library is not responsible for any files, data, or personal information accessed or transmitted using the Wi-Fi hotspot.

10. What if I lose or damage a hotspot?

If you lose or damage a hotspot you will be charged a replacement fee, as described below:

- \$5.00 for the Start Guide
- \$5.00 for the Power Plug
- \$120 for the Device
- \$10 Hotspot Case
- \$140.00 for Full Replacement