

Materials at the Library!



SENSORY TO-GO BAGS

Sensory To-Go Bags contain over-ear headphones, sunglasses, fidget toys, communication cards, and more. They are designed for individuals with autism, sensory processing, or other special needs. These bags are perfect for school field trips, family day out, doctor appointments, and more.

WONDERBOOKS

Wonderbooks are children's books with a ready-to-play audiobook already inside. Take one off the shelf and press play. It's never been more fun to read along! Borrow one today!

ADAPTIVE BOOKS

Enjoy themed books that have been modified to make reading accessible to individuals with disabilities. Adapted books can be helpful for children with communication, visual impairments and cognitive challenges, including those who use AAC device.

SEE BEYOND THE SPECTRUM INITIATIVE

The See Beyond the Spectrum initiative, aims to help create a more accepting and accessible library for people on the spectrum and their families. We will offer a variety of services for the community that will focus on sensory-friendly programming and activities, educating library staff and the community, and expanding the library's collection.



Have an Idea?

Do you have an idea for a program, event, service or even recommendations to add to the library collection?

Talk to Alexis! She is always looking for suggestions. Email her at achanthachack@winchendon-ma.gov or call her at 978-297-0300.

All programs, events, trainings, and more are funded by the Libraries Transforming Communities: Accessible Small and Rural Communities Grant, an initiative of the American Library Association (ALA) in collaboration with the Association for Rural & Small Libraries (ARSL).



Contact Info: ☎ 978-297-0300 🌐 www.bealslibrary.org/autism
✉ achanthachackewinchendon-ma.gov 📍 50 Pleasant Street, Winchendon, MA

SEE BEYOND THE SPECTRUM INITIATIVE
AUTISM INCLUSION
AT THE BEALS MEMORIAL LIBRARY

Walking Beside You!

Caregiver Support Group

We welcome all parents, grandparents, caregivers, and anyone supporting individuals who are neurodivergent, on the autism spectrum, or have other special needs to take part. We aim to create a safe space to come together, support each other, and share the joys and challenges of raising individuals with unique needs. This group will also be a space to gain information, get advice, and hear about valuable community resources.

3RD MONDAY OF EACH MONTH

6:30 - 8PM | IN PERSON OR VIA ZOOM

TO SIGN UP FOR THE ZOOM VISIT [BEALSLIBRARY.ORG/AUTISM](https://bealslibrary.org/autism)

This support group is brought to you by funds provided Libraries Transforming Communities: Accessible Small and Rural Communities is an initiative of the American Library Association (ALA) in collaboration with the Association for Rural & Small Libraries (ARSL).

More Information:

978-297-0300 bealslibrary.org/autism

Upcoming Events April & May

Walking Beside You: Caregiver Support Group

3rd Monday of Each Month from 6:30-8pm

We welcome all parents, grandparents, caregivers, and anyone supporting individuals who are neurodivergent, on the autism spectrum, or have other special needs to take part. We aim to create a safe space to come together, support each other, and share the joys and challenges of raising individuals with unique needs. This group will also be a space to gain information, get advice, and hear about valuable community resources.

Sensory Friendly Browsing Hour

March 16, April 13, and May 11 from 9-10am

Enjoy a special library hour designed to provide a safe and friendly environment for individuals who are neurodivergent, on the autism spectrum, or have other special needs, and their families.

Community Conversation

Autism Inclusion at the Beals Memorial Library

Wednesday, May 8 at 6:00 PM

Are you a parent or caretaker of an autistic, neurodivergent, or other special needs individual? Has your family participated in one of our sensory-friendly programs? We want to hear from you! Join us for a conversation and share your thoughts about the library's See Beyond the Spectrum initiative, share your ideas, learn what is being planned, and connect with others in the community.

Sign Language Workshop

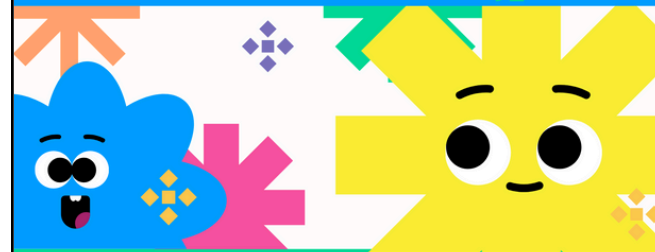
Thursday, May 16 at 6:00pm

Join us as we learn basic American Sign Language. This class is for those who just need a refresher as well as those who want to learn for the first time. All levels and ages are welcome to attend. No Registration Required.

THE BEALS MEMORIAL LIBRARY PRESENTS

SENSORY FRIENDLY BROWSING HOUR

ONE SATURDAY OF EACH MONTH! 9-10 AM



Enjoy a special library hour designed to provide a safe and friendly environment for individuals who are neurodivergent, on the autism spectrum, or have other special needs, and their families.

Friendly library staff will assist in navigating the library and its various services: using computers, locating library materials, and more. Sensory toys and accessories will be available to help encourage positive play/interaction and minimize stress and anxiety.

March 16

April 13

May 11

This event is brought to you by funds provided Libraries Transforming Communities: Accessible Small and Rural Communities is an initiative of the American Library Association (ALA) in collaboration with the Association for Rural & Small Libraries (ARSL).

The library will not be open to the general public during these events. Thank you for understanding. Not a Winchendon Public Schools Sponsored Event

COMMUNITY CONVERSATION

AUTISM INCLUSION AT THE BEALS MEMORIAL LIBRARY

WEDNESDAY MAY 8 AT 6:00 PM

ARE YOU A PARENT OR CARETAKER OF AN AUTISTIC, NEURODIVERGENT, OR OTHER SPECIAL NEEDS INDIVIDUAL? HAS YOUR FAMILY PARTICIPATED IN ONE OF OUR SENSORY-FRIENDLY PROGRAMS?

WE WANT TO HEAR FROM YOU!

JOIN US FOR A CONVERSATION AND SHARE YOUR THOUGHTS ABOUT THE LIBRARY'S SEE BEYOND THE SPECTRUM INITIATIVE, SHARE YOUR IDEAS, LEARN WHAT IS BEING PLANNED, AND CONNECT WITH OTHERS IN THE COMMUNITY.

THIS EVENT IS A PART OF THE SEE BEYOND THE SPECTRUM INITIATIVE AND FUNDED BY THE LIBRARIES TRANSFORMING COMMUNITIES: ACCESSIBLE SMALL AND RURAL COMMUNITIES GRANT, AN INITIATIVE OF THE AMERICAN LIBRARY ASSOCIATION (ALA), AND IN COLLABORATION WITH THE ASSOCIATION FOR RURAL & SMALL LIBRARIES (ARSL).

FOR MORE INFORMATION CONTACT THE LIBRARY AT 978-297-0300 OR VISIT [BEALSLIBRARY.ORG/AUTISM](https://bealslibrary.org/autism)



Sign Language Workshop

Join us as we learn basic American Sign Language.

This class is for those who just need a refresher as well as those who want to learn for the first time. All levels and ages are welcome to attend. No Registration Required.

Thursday, May 16 at 6:00 PM



This event is a part of the See Beyond the Spectrum initiative and funded by the Libraries Transforming

ALA American Library Association